



Hatsize Lab View Instructor HTML5 Quick Reference Card

Hatsize Learning Corporation
Suite 500, 1015 4th Street South West
Calgary, Alberta
T2R 1J4 Canada
Phone: (403) 538-3295
Fax: (403) 538-7993
Email: info@hatsize.com
Website: www.hatsize.com

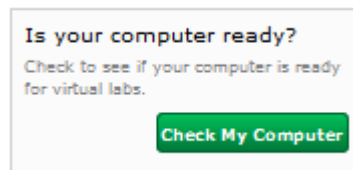


Accessing the Lab Environment Through an HTML5-compatible Browser

Run Syscheck if you are not sure you have a HTML5-compatible browser.

System Checker

1. From the 'Training Schedule' page, click 'Check My Computer'.
2. You may have an option to select a data center. Choose the data center where your class will run. (Note: This only affects the network connectivity test, not the HTML5 compatibility test.)
3. Ensure that your browser meets the minimum requirements.



[Training Schedule](#) > Check My System

Check My System

The Hatsize System Checker will now attempt to determine whether your computer is capable of connecting

Browser Check

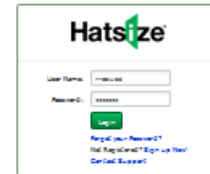
- ✔ JavaScript is enabled
- ✔ Java is enabled
- ✔ Java version is sufficient
- ✔ Browser supports HTML5-based classes

✔ **Result: You can run HTML5 and Java-based classes.**



This is a brief overview of how to enter the lab environment.

Connect to the Hatsize portal using the login details provided.




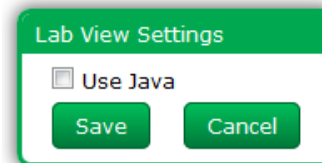
You may then be asked to accept the End User License Agreement and set your time zone.



Select the 'Open' or 'Enter Lab' option to make the connection to the lab environment.



Depending upon system configuration, a  button may display at the top right of your screen. If present, this allows you to enable/disable the Java applet. **Leave unchecked to use the HTML5 client.**



You will then be presented with a web page of clickable images for all of your lab machines.

Tabbed User Interface Overview

The screenshot shows the Hatsize Lab Overview interface. At the top, there is a navigation bar with tabs for 'Lab Overview' and 'Network Topology'. The 'Network Topology' tab is active. Below the navigation bar, there are sections for 'My Systems' and 'Participant Systems'. Each system is represented by a thumbnail with a 'System' dropdown menu. The 'Participant Systems' section includes an 'Activity Indicator' for each system, which is a grey box with the text 'Waiting for Login'.

Network Topology
Displays a clickable topology diagram of the lab systems.

Event Name
Indicates the name of the event to which you are currently connected.
LV_syn_multisys

Settings
If present, allows switching between Java & HTML5 client.
Settings

Disconnect
Clicking will disconnect you from the event and close Hatsize Lab View.
Disconnect

Lab Overview Tab
Contains the thumbnail view of the lab environment and the controls for each system in the lab environment

My Systems

SDB Instructor

Ins_sys2_rfb
System

Ins_sys1_win32h4
System

To access lab systems:

- Click on the component's thumbnail
- Use the System Menu

Participant Systems

SDB Student2

stud1_sys1_rfb
System

stud1_sys2_rdp
System

stud1_sys3_winxp
System

Waiting for Login
stud1_sys4_win32h4
System

Activity Indicator:

- Indicates student's active system
- Turns off after 10 seconds of student inactivity

To access student lab systems:

- Click on the component's thumbnail
- Use the System Menu



HTML5 Instructor View

Keyboard
Keyboard menu for special keys or on-screen keyboard.

System
Special command menu item (Broadcast, Take Control, Release Control).

Disconnect
Disconnect will close this browser tab only.

The screenshot displays the Hatsize interface for a K1-Linux session. At the top, there is a header bar with the Hatsize logo, the session name 'K1-Linux', a 'Time Left: 00:52' indicator, and three dropdown menus: 'Keyboard', 'System', and 'Disconnect'. The main content area shows a CentOS login screen with a blue background and a white floral pattern. A 'Username:' label is followed by an empty input field. Below the login screen is a virtual on-screen keyboard with various keys including function keys (F1-F12), alphanumeric keys, and navigation keys (Home, PgUp, Del, End, PgDn, Enter, Shift, Tab, Caps, Esc, Back, Ins, Del, End, PgDn). An arrow points from the 'Keyboard' menu in the header to the on-screen keyboard.

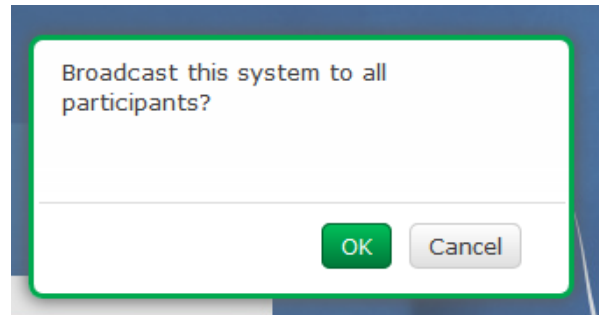
***** Note *****
On-screen keyboard can be toggled on and off through the Keyboard menu.



Instructor-only Operations

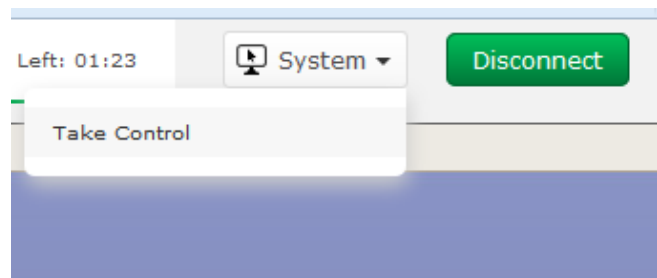
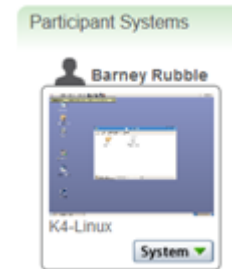
Broadcast Instructor System

1. From the System menu, select Broadcast.
2. Click 'OK' on the pop-up dialog to broadcast the current system to all participants in the event.



Control a Student's System

1. From the Lab View dashboard, click the thumbnail of the student's machine that you wish to control.
2. This will open the student's VM in view-only mode. To turn on shared control mode (where the instructor and student can both control the mouse and keyboard), select 'Take Control' from the System menu.





Control a Student's System (continued)

3. The student will be notified that their VM is now in shared control mode. Both the instructor and student will have control over the keyboard and mouse.

Time Left: 01:44

You are now sharing control of this system with an instructor.

4. When you are finished sharing control with a student, select 'Release Control' from the System menu.

